

Contact details

Munster Simms Engineering Ltd.

Old Belfast Road, Bangor, BT19 1LT, N.Ireland

tel: +44 (0)28 9127 0531 fax: +44 (0)28 9146 6421

info@whalepumps.com whalepumps.com

Whale Water Systems Inc.

100 Corporate Place, Suite 402, Peabody, MA 01960, USA

tel: +1 978 531 0021 fax: +1 978 531 1017

usasales@whalepumps.com whalepumps.com



GB94/3543



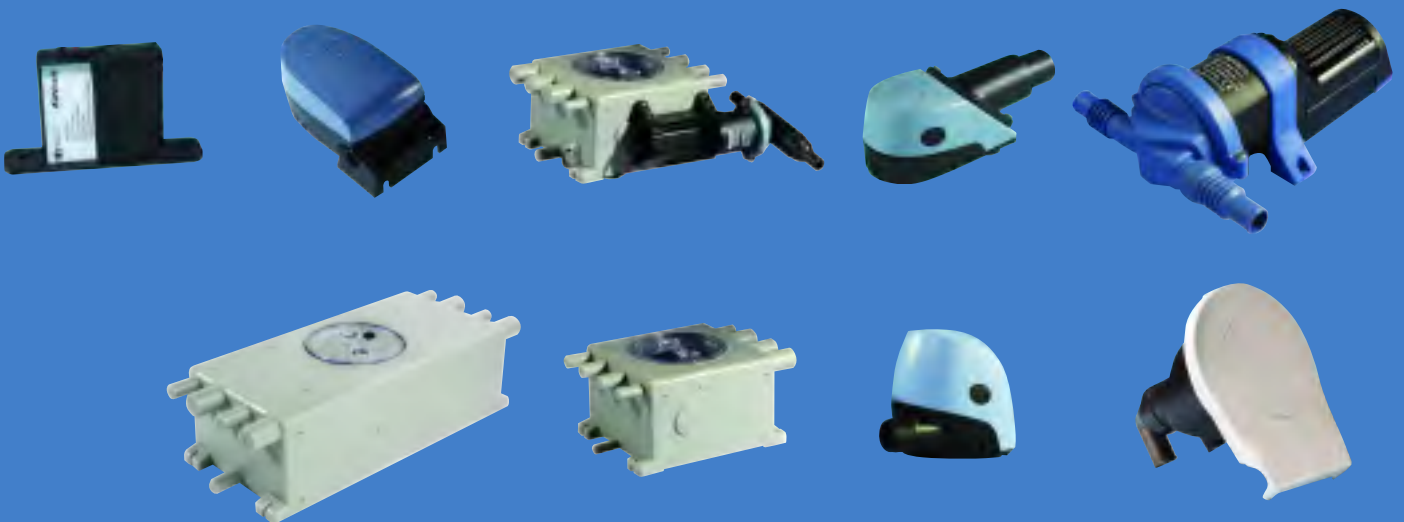
GB04/62920

Innovation!

New for 2007

Nine New Marine Products from Whale

Whale continue to launch innovative new products for boat builders and users in line with their long held reputation for quality and reliability





Bulk Packed (for Builders)
BP2052B (12V d.c.)
BP2054B (24V d.c.)
Retail Packed
BP2052 (12V d.c.)
BP2054 (24V d.c.)

Gulper 320

Multi- Purpose High Capacity Waste Pump

Designed for multi-drain grey waste or remote mounting bilge pump (ISO15083)

- High flow rate 20 LPM (5.3 US GPM) ensures fast drainage and less pump 'on time'
- Built on market leading Gulper non-choke valve technology
- Easy access as a remote mounting bilge pump
- Easy and secure installation
 - Stable three foot design
 - Wrap around securing strap
 - New Ezi-clamp (patent pending) locking ring- simply twist and screw to lock head in desired position



GW8151

Grey Waste Tank

New Grey Waste Tank with Switch

Ideal for use as part of grey waste systems

- Tank can be used for either 12 or 24 V. d.c.
- Includes proven electric field sensor switch technology to detect changes in water level
- Ensures optimal drainage



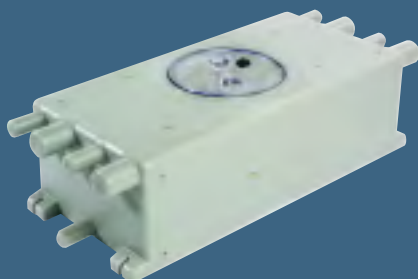
GW1532 (12 V d.c.)
GW1534 (24 V d.c.)

Grey Waste System

Grey Waste System for Boat Builders with Gulper 220 Waste Pump, Waste Tank and Electrical Connections

Pre-assembled kit for installing a grey waste system ideal for vessels up to 55 feet

- Easy installation- One pre-assembled kit with pump already mounted
- Comes ready wired with deutsch plug assembly
- Includes grey waste tank with electronic switch for optimal drainage of the tank
- Switch - uses proven electric field sensor technology to detect changes in water level (patented)



GW1610 - Single switch (no high level alarm)
GW1611 - Single switch (with high level alarm)
GW1620 - Double switch (no high level alarm)
GW1621 - Double switch (with high level alarm)
CS1621 - Basic tank single switch (no high level alarm / deutsch connectors)

Large Capacity Grey Waste Tank

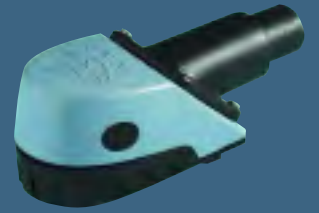
- Grey waste tank for larger vessels more than 55 feet e.g. including bath tub or washing machine
- Designed for use with Gulper 320 high capacity waste pump
- 16.3 litres (4.3 US GAL) capacity
- Fully wired with deutsch connectors
- 4 pump mounting positions (for Gulper 320)
- Optional high level alarm output
- Double/single switch options available
- Reliable electric field sensor switch technology (patented)

Strum Box

$\frac{3}{4}$ " (19mm) Strum Box with Multi-Directional Port and Non-Return Valve

Ideal for use with remote mounting bilge pumps (eg. new Gulper 320 see previous page)

- Easy installation - multi directional port options for either top or side entry
- Non-return valve prevents back flow into the bilge
- Designed to fit deep down in the bilge
- Compact design fits into tight spaces
- Easy cleaning and maintenance
- Compact design



Bulk Packed (for Builders)
SB3422B (Side entry)
SB3465B (Top entry)
Retail Packed
SB3422 (Top/Side entry)

Orca Range

Orca Electric Bilge Pumps Compact and Powerful

- Simple to install multiple wire locations
- High performance - low amp draw means long battery life
- Easy maintenance access to motor cartridge and filter area
- Available in 500, 950 and 1300 GPH models
- 3 year Warranty

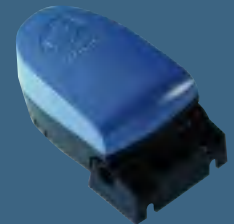


Bulk Packed (for Builders)
BE0500B (500 US GPH 12 V d.c.)
BE0950B (950 US GPH 12 V d.c.)
BE1450B (1300 US GPH 12 V d.c.)
BE1454B (1300 US GPH 24 V d.c.)
Retail Packed
BE0500 (500 US GPH 12 V d.c.)
BE0950 (950 US GPH 12 V d.c.)
BE1450 (1300 US GPH 12 V d.c.)
BE1454 (1300 US GPH 24 V d.c.)

Float Switch

Floatswitch Ideal for use with Electric Bilge Pumps
Including Whale Supersub or Orca Ranges

- Environmentally friendly - no toxic mercury
- Easy to install mounted on either horizontal or vertical surface (e.g. bulkhead or hull)
- Suitable for installations where amp draw is up to 15 amps
- Compact design
- Can be used as a high water bilge alarm (when vertically mounted)

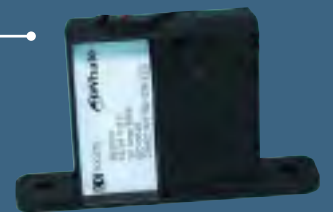


Bulk Packed (for Builders)
BE9002B
Retail Packed
BE9002

Switch

Electric Field Sensor Technology (patented)

- No moving parts to wear out clog or seals to leak
- Ideal for use in controlling electric bilge pumps (12 to 24 V d.c.)
- Senses water level and automatically controls the pump
- Innovative switch design is sealed and solid - state
- Protected from exposure to solvents or corrosion
- Environmentally friendly - no toxic mercury
- Up to 24 volts X 20 amps switching capacity



Bulk Packed (for Builders)
BE9001B
Retail Packed
BE9001

Smartbail

Smartbail Compact Manual Bilge Pump

(Retail Pack Includes both 25mm (1") and 38mm (1 1/2") Ports)

- Fast installation
- Safety assurance – complies with ISO15083
- Sleek integrated design means no lost handles
- Modern styled slim-line design is ideal where space is limited



Bulk Packed (for Builders)
BP5010B - 1" ports
BP5021B - 1 1/2" ports
Retail Packed
BP5012 - includes 1" and 1 1/2" ports